

OPENING DOORS SINCE 1843

Loveitts^{est. 1843}
THE ESTATE AGENTS

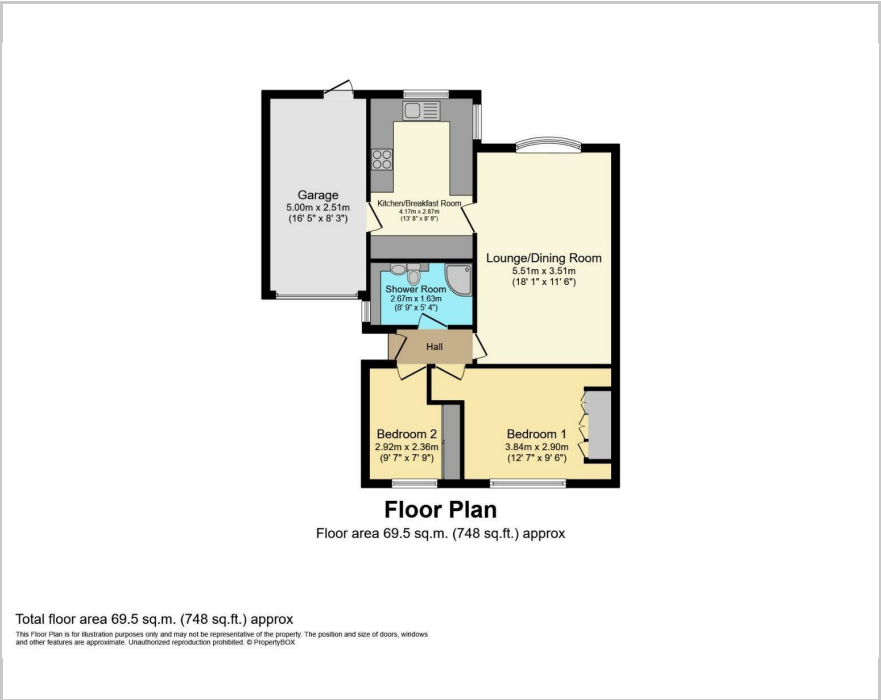


The Raywoods, Nuneaton, CV10 7JY

£240,000



Floor Plan

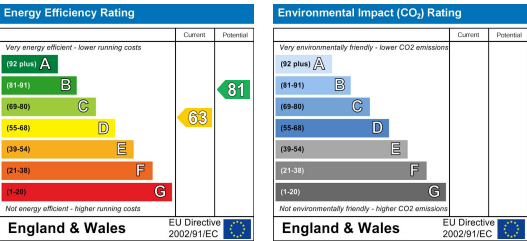


- Link Detached Bungalow
- Spacious Lounge/Dining Room
- Fitted Kitchen With Integrated Hob & Oven
- Two Bedrooms
- Fitted Wardrobes
- Modern Shower Room
- GFCH & Double Glazing
- Easy To Maintain Garden
- Garage & Hardstanding Providing Off Road Parking
- No Upward Chain

Viewing

Please contact our Nuneaton Office on 024 7634 7676 if you wish to arrange a viewing appointment for this property or require further information.

Energy Efficiency Graph



Area Map



These particulars, whilst believed to be accurate are set out as a general outline only for guidance and do not constitute any part of an offer or contract. Intending purchasers should not rely on them as statements of representation of fact, but must satisfy themselves by inspection or otherwise as to their accuracy. No person in this firm's employment has the authority to make or give any representation or warranty in respect of the property.



Nuneaton
39 Church Street, Nuneaton CV11 4AD
024 7634 7676

Registered in England & Wales Company no. 7558151